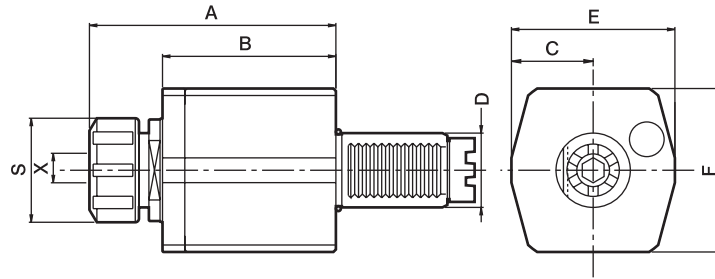
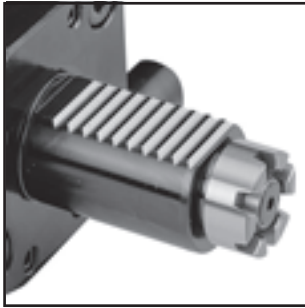




Axial Drilling And Milling Heads - For "Baruffaldi" Type

TYPE SPUR COUPLING-MT



- Power Transmission According To "BARUFFALDI"
- MT: Frontal Transmission Coupling Gear is Fixed Version

- To be used for collet DIN 6499
- External coolant supply
- Collet is not included.

DIMENSIONS

Order No.	D DIN 69880	X Capacity	S	Maximum R.P.M.	i	A	B	C	E	F	CODE NO.
DA20MT16	20	1-10 ER16	32	6000	1:1	76	48	25	50	50	5006-103□
DA30MT25	30	1-16 ER25	42	6000	1:1	86	55	33	66	66	5006-104□
DA40MT32	40	2-20 ER32	50	6000	1:1	89	55	39	79	78	5006-105□
DA50MT40	50	3-26 ER40	63	6000	1:1	123	81.5	40	84	88	5006-106

Axial Tapping Heads

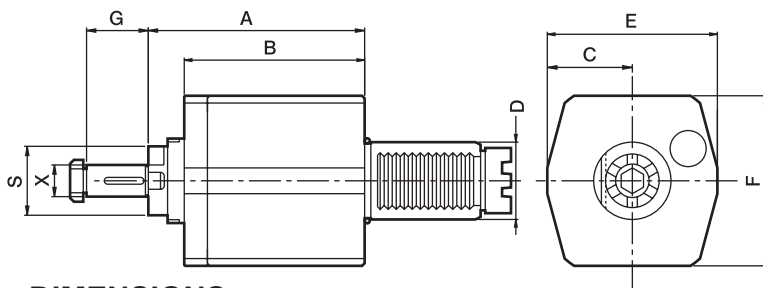
DIMENSIONS

Order No.	D DIN 69880	X Capacity	S	Maximum R.P.M.	i	A	B	C	E	F	CODE NO.
TDA30MT16	30	1-10 ER16	32	3000	1:1	109	55	33	66	66	5006-107□
TDA40MT20	40	1-13 ER20	35	3000	1:1	120	55	39	79	78	5006-108□
TDA50MT25	50	1-16 ER25	42	3000	1:1	136	81.5	40	84	88	5006-109



Axial Milling Heads

TYPE SPUR COUPLING-MT



- External coolant and intermediate rings supply.
- To be used for cutter arbor according to DIN 6358

DIMENSIONS

Order No.	D DIN 69880	X DIN 6358	S	Maximum R.P.M.	i	A	B	C	E	F	G	CODE NO.
DA30MT16C	30	16	32	3000	1:1	71	55	33	66	66	27	5006-110□
DA40MT16C	40	16	32	3000	1:1	68.5	55	39	79	78	27	5006-111□
DA40MT22C	40	22	32	3000	1:1	68.5	55	39	79	78	31	5006-112□
DA50MT22C	50	22	40	3000	1:1	95.5	81.5	40	84	88	31	5006-113□
DA50MT27C	50	27	40	3000	1:1	95.5	81.5	40	84	88	33	5006-114