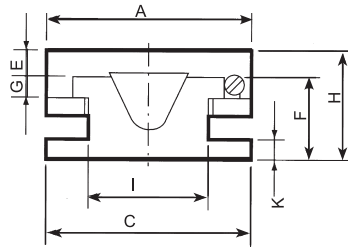
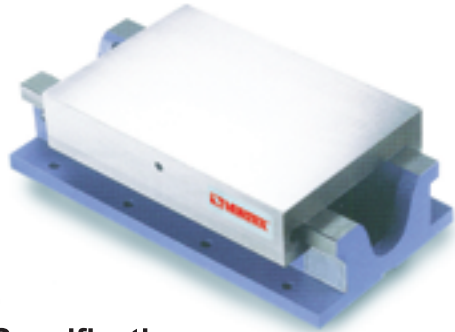




Economic H Type Slide Table



- Material : FC-30
- Precision : $\pm 0.01 / 100\text{mm}$
- FEATURE : The sliding surfaces are treated by heat-treatment & precision ground The slide used V type.

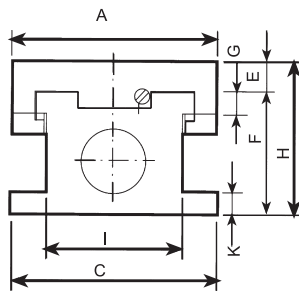
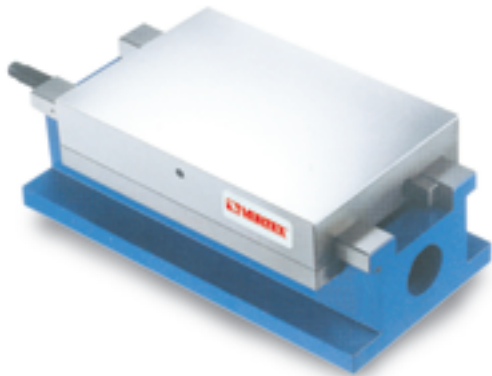
•Specifications

Unit: mm

ORDER NO.	A x B Table surface	C x D Base area	H	E	F	G	K	I	CYLINDER OF THROUGH HOLE	WEIGHT kgs	CODE NO.
STB-1630	160x200	160x300	90	20	60	17	20	90	U TYPE	19	7002-501
STB-1640	160x200	160x400	90	20	60	20	20	90	U TYPE	22	7002-502
STB-2040	200x300	200x400	120	30	90	20	20	120	U TYPE	38	7002-503
STB-2060	200x300	200x600	120	30	90	20	20	120	U TYPE	48	7002-504
STB-2080	200x300	200x800	120	30	90	20	20	120	U TYPE	60	7002-505
STB-20100	200x300	200x1000	120	30	90	20	20	120	U TYPE	70	7002-506



Power H Type Slide Table



- Material : FC-30
- Precision : $\pm 0.01 / 100\text{mm}$
- FEATURE : The sliding surfaces are treated by heat-treatment & precision ground

•Specifications

Unit: mm

ORDER NO.	A x B Table surface	C x D Base area	H	E	F	G	K	I	CYLINDER OF THROUGH HOLE	WEIGHT kgs	CODE NO.
STC-2040	200x300	200x400	150	30	120	20	25	132	65 ϕ	50	7002-520
STC-2050	200x300	200x500	150	30	120	20	25	132	65 ϕ	58	7002-521
STC-2060	200x300	200x600	150	30	120	20	25	132	65 ϕ	65	7002-522
STC-3050	300x350	300x500	188	39	145	25	28	213	75 ϕ	98	7002-524
STC-3070	300x350	300x700	188	39	145	25	28	213	75 ϕ	120	7002-525
STC-3080	300x350	300x800	188	39	145	25	28	213	75 ϕ	135	7002-526