



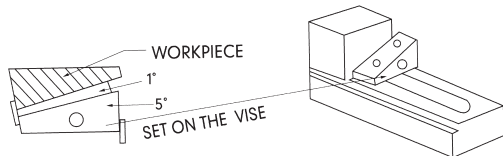
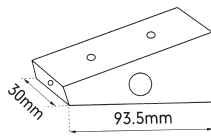
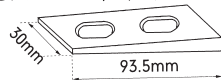
Precision Angle Blocks



WEIGHT : 7.2 kg

BASE PLATE
5°, 10°, 15°, 20°, 25°, 30°, 35°, 40°, 45°

TOP PLATE 1°, 2°, 3°, 4°



EXAMPLE FOR USE

ORDER NO.	PLATE	ANGLE DEGREE	CODE NO.
AB-113 (13PCS/SET)	TOP PLATE	1°, 2°, 3°, 4°	2006-040
	BASE PLATE	5°, 10°, 15°, 20°, 25°, 30°, 35°, 40°, 45°	

FEATURES

1. ANGLE TOLERANCE : 0.02MM
2. CAN BE ASSEMBLED TOP PLATE WITH BASE PLATE FOR 6° - 9°, 16° - 19°, 26° - 29°, 36° - 39°, 46° - 49°
3. HARDEN TREATMENT UP TO HRC55° - 58°
4. MADE BY THE MATERIAL OF SK2
5. CAN BE COOPERATE TWO SET FOR USE.



Hardened Steel Squares



Squares have accurate right angles both inside and outside. Made from a single piece of fully tool steel. Beams and blades are ground and accurately lapped for straightness and parallelism. Accuracy Class H Blades are beveled on both edges of each side. Beam is grooved at inner corner for clearance of burr and dirt. All squares are fully hardened (Rockwell 55). Packed in individual cartons. Accuracy 0.02MM

ORDER NO.	SS - 304	SS - 306	SS - 308	SS - 310	SS - 312
L x H x W	100 x 70 x 8MM	100 x 150 x 8MM	100 x 200 x 8MM	250 x 160 x 40 x 10MM	300 x 200 x 45 x 12MM
NET WEIGHT	0.2KG	0.4KG	0.8KG	1.2KG	2KG
CODE NO.	2006-050	2006-051	2006-052	2006-053	2006-054

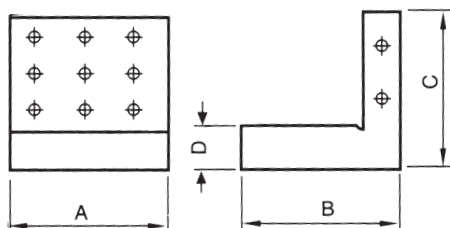


Precision Steel Angle Plates



MATERIAL : YK30 ALLOY STEEL
ACCURACY : 0.005/100MM
HARDEN TREATMENT UP TO HRC 58°

HIGH PRECISION TYPE



ORDER NO.	A	B	C	D	N.W.	CODE NO.
VRS-33	3" 75	3" 75	4" 100	1" 25	2.5kg	2006-060
VRS-44	4" 100	4" 100	4" 100	1" 25	3.4kg	2006-061
VRS-46	4" 100	4" 100	6" 150	1" 25	4.5kg	2006-062