



Precision Duplex Dresser



ORDER NO. V-TDF
CODE NO. 2012-030
WEIGHT : 3.2 kg

FEATURES

PRECISION DUPLEX DRESSER is designed to simultaneously dress both sides of a grinding wheel, precisely and without deformation. It is useful for the thinning of grinding wheels or the dressing of thin wheels. manufactured of tool steel and hardened throughout to HRC 60 for life time use.

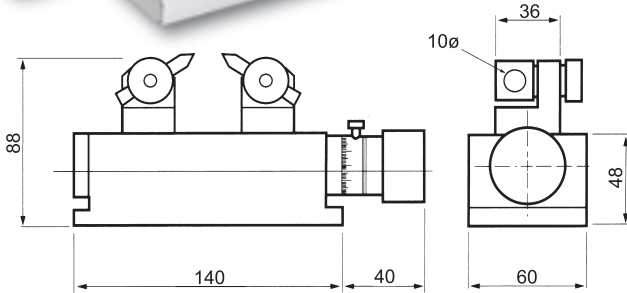
Specifications:

Maxi width of wheel.....40mm(1-9/16")

Maxi dressing depth.....40mm(1-9/16")

Mini dressing width.....0.2mm(0.0079")

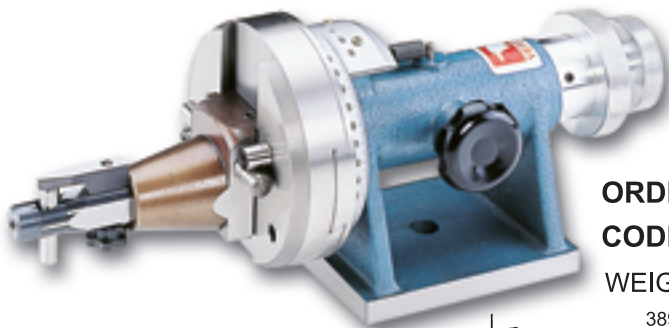
Graduation.....0.02mm(0.0001")



Max.thickness	Min.	Max.	Min.
40mm	0.2mm	40mm	0.02mm/div

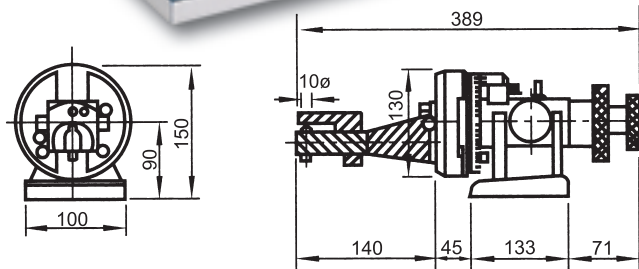


Radius And Angle Dresser



ORDER NO. V-TDG
CODE NO. 2012-040
WEIGHT : 10 kg

- .6 minute vernier reading.
- .5/1-2" longx6-1/2" high.
- .Dual purpose knob for drum & angle movement.
- .Stop for concave and convex radii.
- .Comes with setting gage for diamond tool.

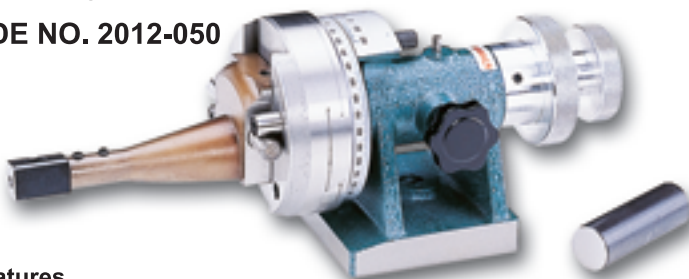


Specifications:	
Max. wheel diameter, standard.....	11"
Concave cadius with standard diamonds.....	0-2 ¹ / ₄ "
Concave cadius with rta-tail diamonds.....	0-2 ¹ / ₄ "
Concave cadius.....	0-4"
Tangent travel in either direction.....	1.950"
Center line.....	3.4"



Radius And Angle Dresser

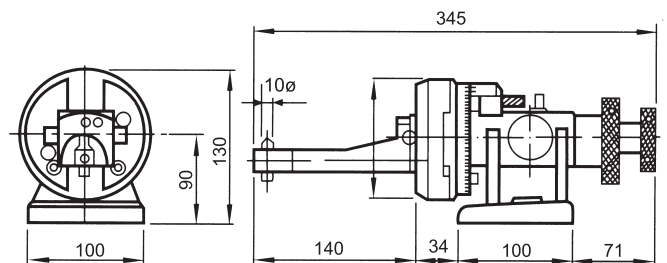
ORDER NO. V-TDE
CODE NO. 2012-050



N.W.9Kg

Features

- No height gauge or set-up aids required.
- Radius is set on the grinder by measuring over the two pins or by inserting a gauge block for direct reading.
- Concave radius or Convex radius is determined by using either the left or right hand pins.



Grinding wheel dressing application

