

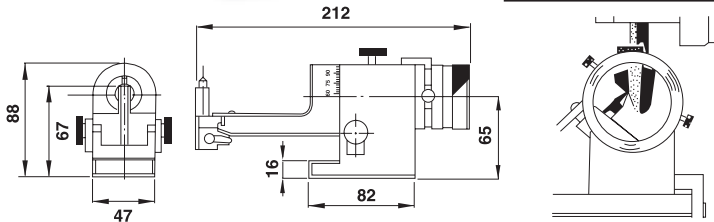
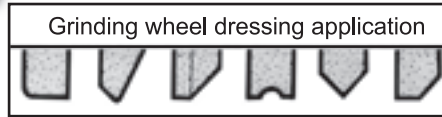


Optical Radius Angle Dresser



ORDER NO.	V-TDT
CODE NO.	2012-060
WEIGHT	4.2 kg

Visit Universal Wheel Dresser Adoptable on Surface grinder and universal tool grinder for dressing grinding wheel into various cross sections of flat or curved shapes. By "SIGHTING" the diamond point through the lens, radil and angetes can easily be made perfectly tangent-Visually-Even with dla. monds. Likewise radil can be blended together with most unbelievable accuracy.

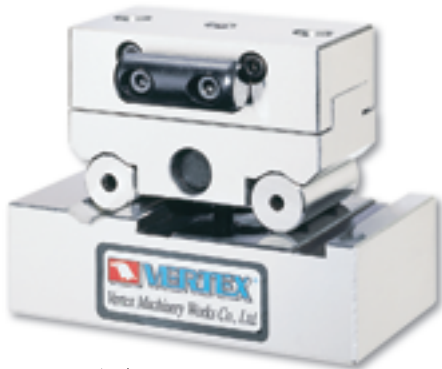


Features

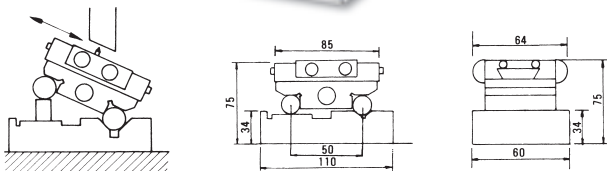
- Center height.....65mm
- Max wheel diameter.....200mm
- Max convex radius.....10mm
- Max concave radius.....25.4mm
- Dressing angle.....95°-0°-95°
- Tangential travel.....Appo x 22.5mm



Matco Sine Dresser



- This fine precision-made unit dresses grinding wheels to any angle from 0°-60°degrees with new smoothness and accuracy.
- The cross feed up to 50mm, center distance 0.01mm, Sine angle absolutely accurate.
- N.W.3kg



SPECIFICATION

Unit:mm

ORDER NO.	BLOCK CENTER DISTANCE	CENTER TOLERANCE	MAX. CROSS FEED	CODE NO.
VP-50	50	± 0.01	50	2012-070



Matco Sine Dresser

ORDER NO.	V-50D
CODE NO.	2012-080
WEIGHT	1.5 kg

This fine precision-made unit dresses grinding wheels to any angle from 0°-60°degrees with new smoothness and accuracy. The cross feed up to 50mm, center distance 0.01mm, Sine angle absolutely accurate.

