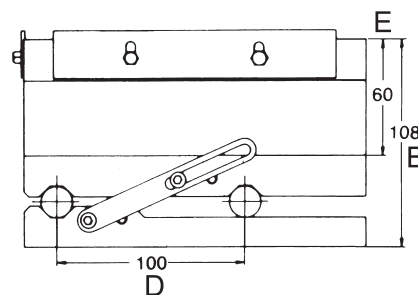
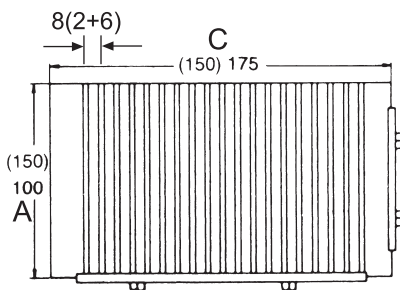




Magnetic Sine Plate

ORDER NO. V-47M, V-66M, V-612M

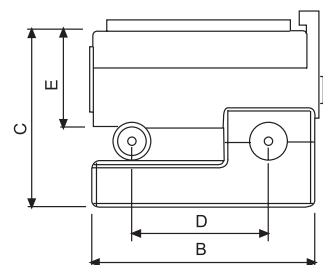
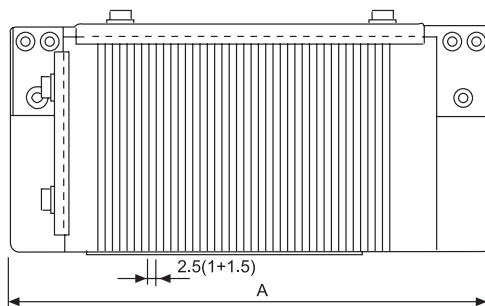
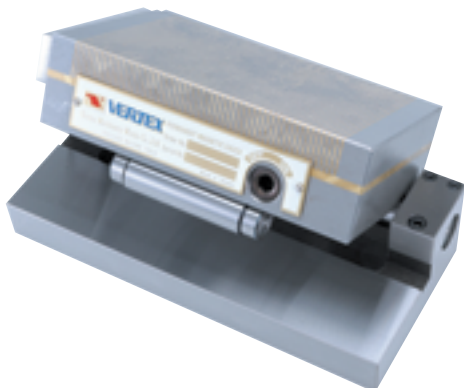


ORDER NO.	A	B	C	D	E	ANGLE	N.W	CODE NO.
V-47M	100	108	175	100	60	0°~55°	15	2015-020
V-66M	150	108	150	100	60	0°~55°	17	2015-021
V-612M	150	108	300	100	60	0°~55°	15	2015-022

MAGNETIC SINE PLATES with a permanent magnetic, never lose its strong power by press down a screw based on the plate and regain the original after work.



Magnetic Sine Plate With Fine Pole

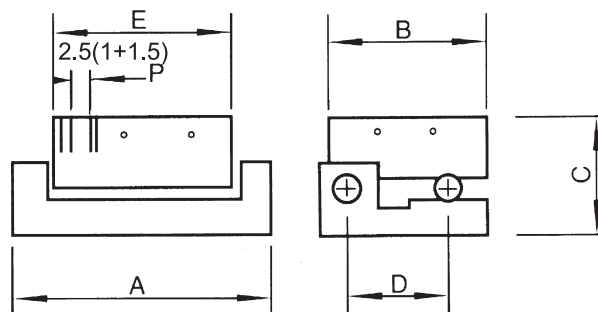
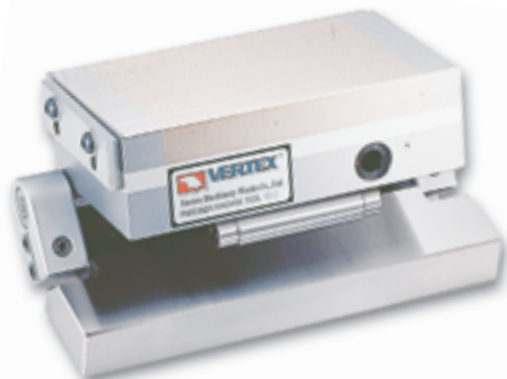


ORDER NO.	A	B	C	D	E	P	ANGLE	N.W	CODE NO.
V-47MF	225	102	87	75	47	2.5 (1+1.5)	0°~60°	11.5kg	2015-030
V-66MF	200	152	87	100	47			14.8kg	2015-031
V-612MF	350	152	87	100	47			28kg	2015-032

Permanent magnetic chuck. Removable handle for positive on/off control, side rails, end rails all included. All have 200 minute angle steps with 0.005mm(0.0002") tolerance in squareness, parallelism and roll center distances. The chuck of pole is 1+1.5



Sine Plate With Fine Pole Magnetic Chuck



ORDER NO.	A	B	C	D	E	P	ANGLE	N.W	CODE NO.
V-47MFP	225	100	82	75	175	2.5 (1+1.5)	0°~60°	11.5	2015-040
V-66MFP	200	150	82	100	150			13	2015-041
V-612MFP	350	150	87	100	300			26.5	2015-042

Special feature with magnetic chuck:
A.Can fix tiny parts firmly on the chuck which pitch is only 1.5mm.
B.Easy operation for adjusting angle thickness and light weight.
C.The chuck of pole is 1+1.5