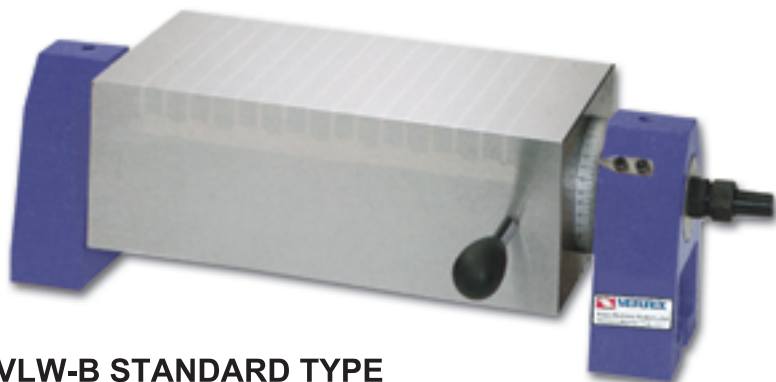


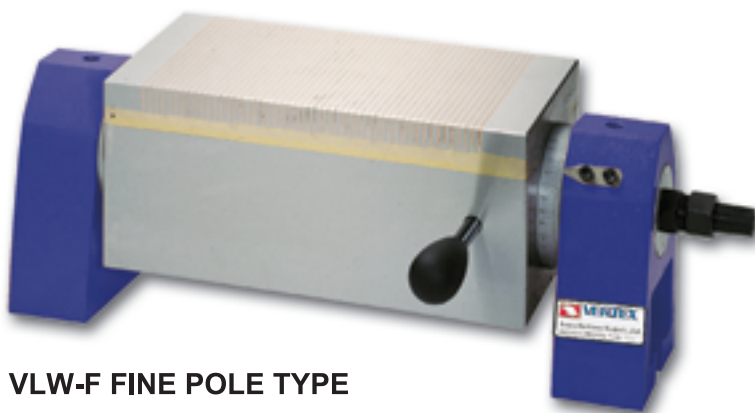
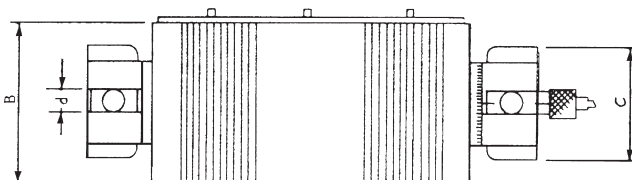


# Rotary Electro Magnetic Plate

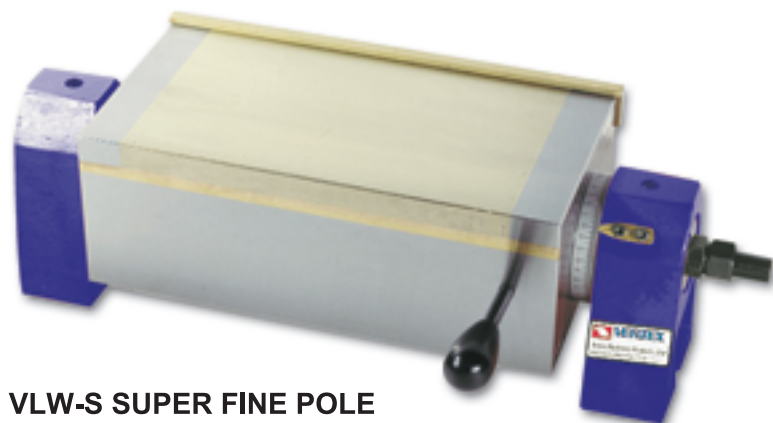
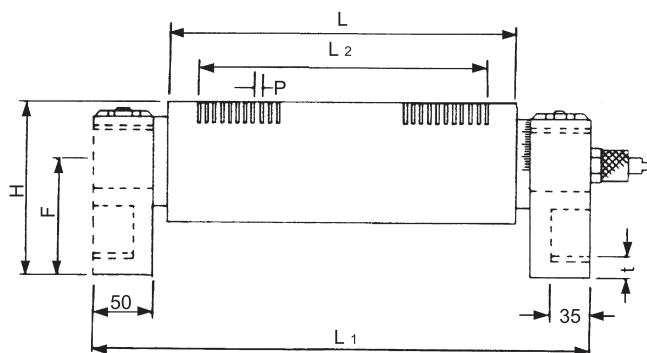
ALL ELECTRO MAGNETIC PLATE ARE NEED THE CHUCK CONTROLLER VCC-



VLW-B STANDARD TYPE



VLW-F FINE POLE TYPE



VLW-S SUPER FINE POLE

## APPLICATION

Suitable for angle grinding on grinder and operation of cutter finishing machine.

## FEATURES

- Easy to set rotary angle ( $0^{\circ}$ - $90^{\circ}$ )
- Water-resistant treatment and FRP coil holder provide excellent insulation.
- Tiny gap ensures dense magnetic field.  
Able to grind small and thin workpiece with angle.
- Special sizes are available upon request.

## STANDARD TYPE & FINE POLE TYPE

Unit:mm

ORDER NO.	DIMENSION	FACE PLATE			POLE PITCH P	ROTARY SEAT PLATE				VOLTAGE (DC)	CURRENT	HEIGHT H	WEIGHT KG	CODE NO.
		B	L	L2		d	C	F	L1					
VLW-510B	125 X 250	125	250	190	15 (3+12)	16	100	96	380	90V	0.35A	150	34	2015-301
VLW-612B	150 X 300	150	300	240					430					0.45A
VLW-510F	125 X 250	125	250	190	4 (1+3)	16	100	96	380	90V	0.35A	150	34	2015-303
VLW-612F	150 X 300	150	300	240					430					0.45A
VLW-510S	125 X 250	125	250	190	2 (1+1)	16	100	96	380	90V	0.35A	150	34	2015-305
VLW-612S	150 X 300	150	300	240					430					0.45A