

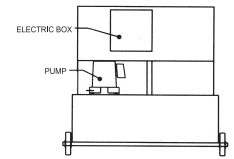
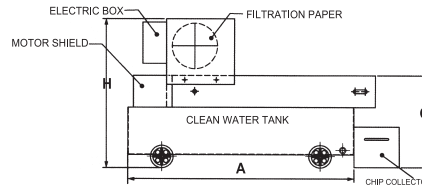
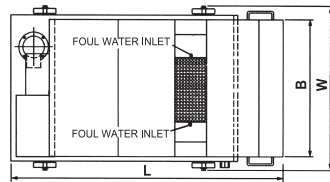


Paper Filter



FEATURES

1. Applicable to both ferrous and non-ferrous metals.
2. Filtration effect depends on paper accuracy.
Use 50μ , 30μ , or 15μ .
3. Not suitable for heavy machining for the sake of paper consumption.
4. To save filtration material, use magnetic filter for rough filtration.
5. Standard accessory : one roll of paper.



ORDER NO.	DISPOSAL CAPACITY L/MIN	WATER TANK CAPACITY	L	A	B	C	W	H	PUMP		PAPER MOTOR	PAPER	REMARKS	N.W. (kg)	G.W. (kg)	CODE NO.
									HP	OUTLET						
PF-20	20	100	1050	850	600	400	720	610	1/8	PF1/2"	25W	W : 500MM L : 90M	wheels attached	95	120	2020-001
PF-40	40	120	1200	1000	600	400	720	660	1/8	PF1/2"	25W			130	150	2020-002
PF-60	60	140	1350	1150	600	400	720	660	1/8	PF1/2"	25W			140	170	2020-003
PF-80	80	160	1500	1300	600	400	720	660	1/4	PF3/4"	25W			170	190	2020-004
PF-120	120	210	1500	1300	800	400	920	740	1/2	PF3/4"	40W	W : 700MM L : 90M		185	210	2020-005
PF-160	160	260	1800	1600	800	400	920	740	1/2	PF3/4"	40W			250	280	2020-006



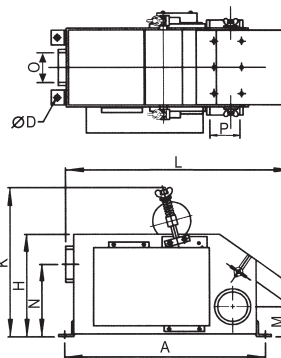
Magnetic Separator

FEATURES

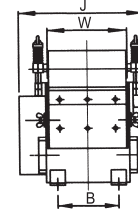
1. Usable in heavy machining for ferrous metal.
2. No filtration-material consumption.
3. Most economic in purchase & utilization cost.
4. Able to serve rough filtration in other filtration process.



MC-60



MC-20~160



Standard accessories:

- a. Chip collector 1 pc
- b. plugs 2 pcs
- c. Elbow 1 pc
- d. Steel tubes 3pcs

ORDER NO.	DISPOSAL CAPACITY L/MIN	L	W	H	M	N	A	B	D	J	K	INLET O	OUTLET P	MOTOR	N.W. (kg)	G.W. (kg)	CODE NO.
MC-20	20	464	130	205	65	145	398	100	11	230	300	PF1-1/2"	PF1-1/2"	220V3ø ,25W	18	20	2020-010
MC-40	40	464	150	205	65	145	398	120	11	250	300	PF2"	PF2"	220V3ø ,25W	20	23	2020-011
MC-60	60	464	206	205	60	150	398	176	11	306	300	PF2"	PF2"	220V3ø ,25W	25	28	2020-012
MC-80	80	464	242	205	60	150	398	212	11	342	300	PF2"	PF1-1/2"	220V3ø ,25W	30	40	2020-013
MC-120	120	530	270	245	68	185	456	230	11	380	345	PF1-1/2"	PF3"	220V3ø ,40W	50	65	2020-014
MC-160	160	530	354	245	68	185	456	314	11	464	345	PF3"	PF3"	220V3ø ,40W	60	75	2020-015