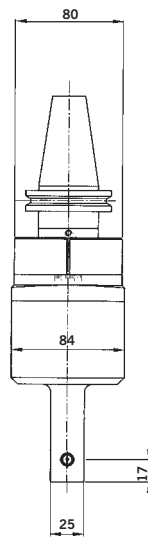
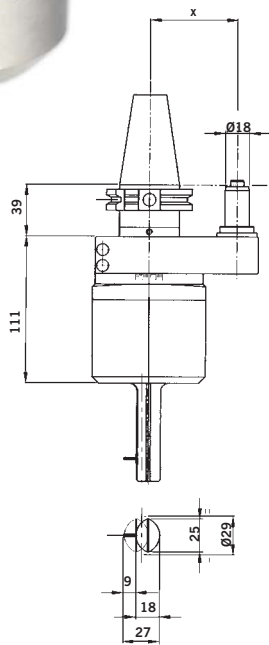


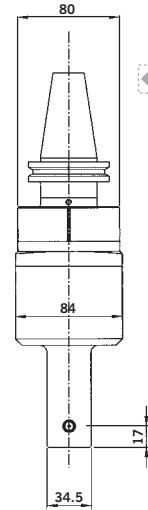
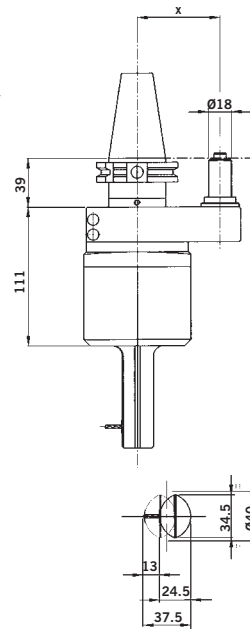


- ▶ Tailor made to meet customer specifications
- ▶ **Exécutions spéciales sur demande**
- ▶ **Sonderausführungen auf Anfrage**
- ▶ **Ejecuciones especiales bajo demanda**
  
- ▶ Less interference in tool changer
- ▶ **Moindre interférence dans le magasin d'outils**
- ▶ **Kleinere Interferenz im Werkzeuglager**
- ▶ **Menor interferencia en el almacén de herramientas**



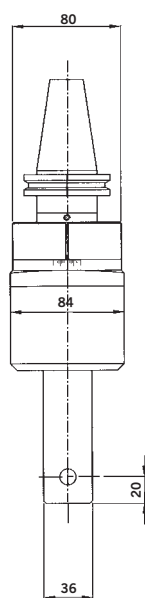
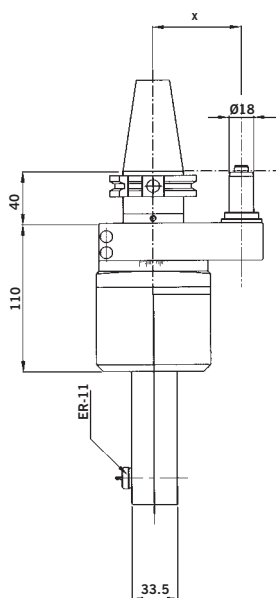
### CAP-0

- ▶ **Smaller size, upon request**
- ▶ **Moindre taille, sur demande**
- ▶ **Kleinere Größe, auf Anfrage**
- ▶ **Menor tamaño bajo demanda**



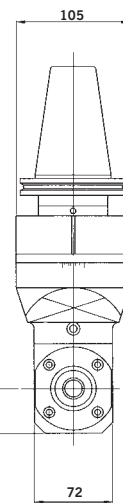
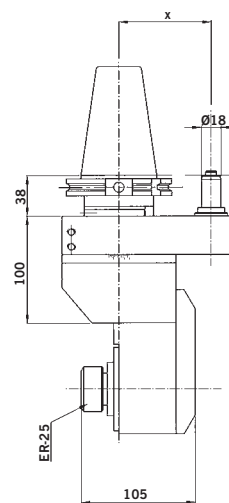
### CAP-1

- ▶ **For difficult machining areas**
- ▶ **Pour les endroits d'accès difficile**
- ▶ **Für schwer zugänglichen Stellen**
- ▶ **Para lugares de difícil acceso**



### CAP-2

- ▶ **Other dimensions upon request**
- ▶ **D'autres longueurs et encombrements sur demande**
- ▶ **Weitere Abmessungen auf Anfrage**
- ▶ **Otras longitudes y dimensiones bajo demanda**



### CAP-3

- ▶ **Configuration for larger cutting capacity**
- ▶ **Configuration pour une plus grande capacité de coupe**
- ▶ **Gestaltung für größere Schnittkapazität**
- ▶ **Configuración para mayor capacidad de corte**

## FEATURES / CARACTÉRISTIQUES / MERKMALE / CARACTERÍSTICAS

	CAP-0	CAP-1	CAP-2	CAP-3
R.P.M. max	3.000	3.000	3.000	4.000
KW	1	1	1,4	5
Ø MAX	4	5	7	16
KG	4Kg	5Kg	6Kg	9Kg
+	1:1	1:1	1:1	1:1
Nm. max	4	4	9	30
ISO/DIN/MAS BT	30/40	30/40	40/50	50
HSK	32/50/63	32/50/63	63/100	80/100

(\*) According to the machine / Suivant la machine / Nach der Maschine / Según máquina